



12LC-134

12V 143Ah



Q-Batteries Akku 12LC-134 battery is a special deep cycle battery which is designed for intensive cyclic discharge usage. Because of the very thick lead plates it's possible to achieve more cycles and longer lifetime.

Application

Electric wheelchair, caravan/marine, cleaning machines, golf cart, vehicle lifts, solar energy system, u.v.m.

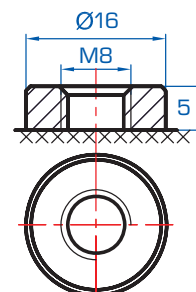
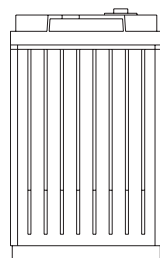
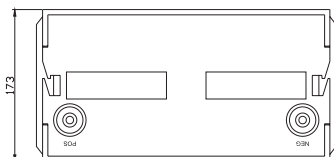
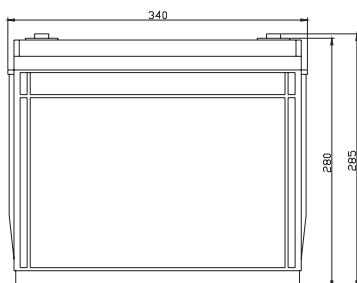


Specification

Voltage Per Unit	12 V		
Capacity	143 Ah	@20hr-rate to 1.8V per cell @25°C	
Cells Per Unit	6		
Weight	ca. 41,5 kg +/- 3%		
Max. Discharge Current	1340 A (5 sec.)		
Internal Resistance	ca. 4 m Ω		
Operating Temperature Range Normal	Discharge: - 15°C – 50°C	Charge: - 10°C – 50°C	Storage: - 20°C – 50°C
Operating Temperature Range	25°C ± 5°C		
Self Discharge	Valve Regulated Lead Acid (VRLA) batteries can be stored for more than 6 months at 25°C. Self-discharge ratio less than 3% per month at 25°C. Please charge batteries before using.		
Terminal	F12 (M8 bolt)		
Container Material	A.B.S. (UL94-HB)		

Dimensions

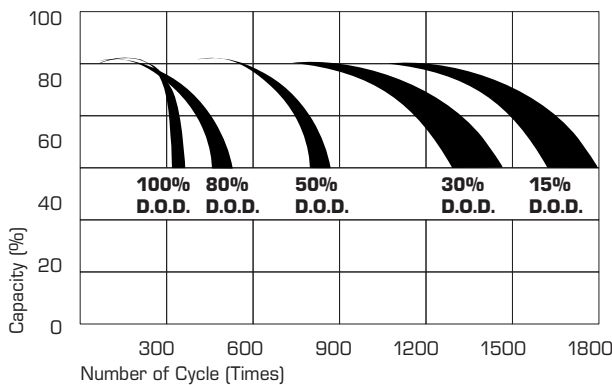
340 Length x 173 Width x 280 mm Height



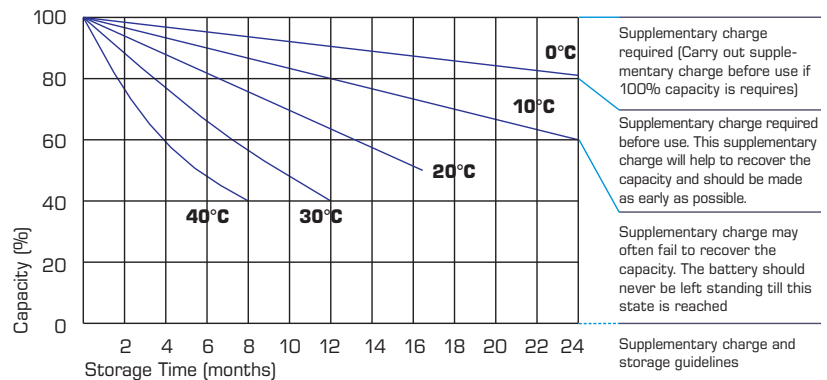
Constant current discharge characteristics: A (25°C)

F.V/Time	5 Min.	10 Min.	15 Min.	30 Min.	1 HR	2 HR	3 HR	4 HR	5 HR	8 HR	10 HR	20 HR
9.60 V	408.2	297.9	243.1	151.0	87.0	52.12	36.02	29.52	24.17	16.65	14.07	7.741
10.0 V	396.4	283.5	238.1	148.5	86.70	51.73	35.89	29.39	24.02	16.51	13.94	7.600
10.2 V	384.6	273.4	234.4	147.2	85.89	51.33	35.61	29.25	23.88	16.37	13.80	7.459
10.5 V	345.4	252.3	223.1	143.5	85.09	50.94	35.47	28.98	23.60	16.24	13.67	7.318
10.8 V	311.8	230.1	205.7	137.2	83.08	50.03	34.51	28.29	23.17	15.97	13.53	7.178
11.1 V	266.2	205.6	184.5	128.5	78.93	47.81	32.99	26.93	22.17	15.29	13.13	6.756

Life characteristics of cyclic use:



Storage characteristic:



Capacity Factors with different Temperature:

Battery Type		-20°C	-10°C	0°C	5°C	10°C	20°C	25°C	30°C	40°C	45°C
GEL Battery	6V & 12V	50%	70%	83%	85%	90%	98%	100%	102%	104%	105%
	2V	60%	75%	85%	88%	92%	99%	100%	103%	105%	106%
AGM Battery	6V & 12V	46%	66%	76%	83%	90%	98%	100%	103%	107%	109%
	2V	55%	70%	80%	85%	92%	99%	100%	104%	108%	110%

Charging Method:

Charge the batteries at least once every six months, if they are stored at 25°C

Constant Voltage (V)	-0.2C x 2h + 2.4-2.45V/Cell x 24h, max. Current 0.3CA
Constant Current (A)	-0.2C x 2h + 0.1CA x 12h
Fast	-0.2C x 2h + 0.3CA x 4.0h